

SPEC SHEET + MEASUREMENTS

SPORT-TEK

Sport-Tek® Youth Travel Full-Zip Jacket. YST800

Product photo



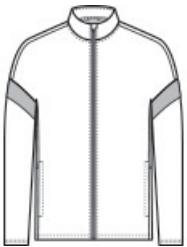
Inspired by classic double-knit sets, this moisture-wicking jacket shows that you are part of the team.

- 100% recycled polyester double knit
- Tag-free label
- Self-fabric locker loop
- Coil zipper
- Side slash pockets
- Coloblock self-fabric detail on sleeves

CARE INSTRUCTIONS

Machine Wash Cold With Like Colors. Only Non-Chlorine Bleach When Needed. Tumble Dry Low. Cool Iron If Necessary. Do Not Dry Clean.

Sketches



front



back

SPEC SHEET + MEASUREMENTS



Sport-Tek® Youth Travel Full-Zip Jacket. YST800

PRODUCT MEASUREMENTS

	XS	S	M	L	XL
Size	4/5	6/8	10/12	14/16	18/20
Body Length at Back	18 1/2	20 1/2	22 1/2	24 1/2	26 1/2
Chest	14 1/2	16	17 1/2	18 1/2	20
Sleeve Length from Center Back	22 1/2	25 1/2	28	30 1/2	33 1/2

Body Length at Back: Measured from high point shoulder to finished hem at back.

Chest: Measured across the chest one inch below armhole when laid flat.

Sleeve Length from Center Back: Measure from Center Back neck to shoulder point to sleeve hem.

SIZE CHARTS

	XS	S	M	L	XL
Size	4/5	6/8	10/12	14/16	18/20
Chest	22-24	25-27	28-30	30-32	32-34

SPEC SHEET + MEASUREMENTS

SPORT-TEK

Sport-Tek® Youth Travel Full-Zip Jacket. YST800

HOW TO MEASURE



CHEST

Measure under the arm and around the fullest part of the chest with arms down, keeping tape horizontal.

COLORS



Black/ Black
PMS BLACK
C



Black/ White
PMS BLACK
C



Deep Red/
White
PMS 201C



Iron Grey/
White
PMS 7540C



True Navy/
White
PMS 533C



True Royal/
White
PMS 7687C



White/ Iron
Grey
PMS 7540C